



regul8

Statistical Reporting as a Service

HUBIO



What is regul8?

regul8 is a turnkey data platform specialized in managing and delivering regulatory and statistical reporting for Property & Casualty (P&C) insurance companies. It handles data transformation, data validation, error correction, reconciliation, submission management and regulator audit support.

It supports the following regulatory & industry data submissions:

- GISA Automobile Statistical Plan
- GISA Commercial Liability Statistical Plan
- FA (Facility Association) Risk Sharing Pool (RSP)
- PSA (Plan Statistique Automobile) & FCSA (Fichier Central des Sinistres Automobiles) for Quebec's GAA (Groupement des Assureurs Automobiles)
- PRR (Plan de Répartition des Risques) also known as QRSP (Quebec Risk Sharing Pool)
- CGI AutoPlus Phase 2
- IBC DASH

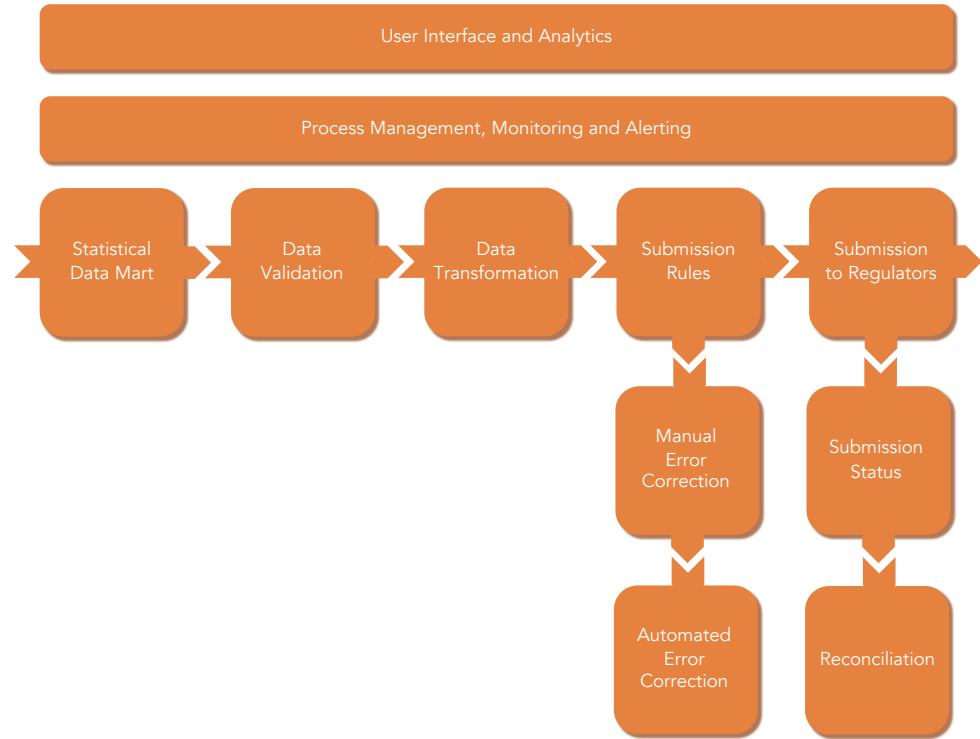
Upcoming supported plans:

- US Workers Compensation (WCPOLS and WCSTAT)
- US ISO
- US NISS

HUBIO



regul8 Functionality





regul8 Use Cases





Benefits

Peace of mind

- Robust specialized solution designed through 20 years of production and multiple implementations
- Automated alerts for events such as late source data and out-of-balance processing
- Evergreened SaaS model to minimize technical debt

Rapid implementation and integration

- Handles multiple data sources from multiple core systems
- No-code approach
- Single data source schema (Statistical Data Mart) per LOB to generate all statistical submissions

Deficiency fee reduction

- A pre-configured rules engine to validate data quality before submission.
- regul8 manages error corrections which reduce costs and avoids deficiency fees

Automation and efficiency

- Handling of Out-Of-Sequence Endorsements and data slicing
- Auto-correction of future transactions based on manual risk corrections
- Configurable workflow and alerts
- User dashboard to provide batch status-at-a-glance

Insight

- Analytics on operational performance, data quality, error and corrections
- Greater historical visibility on the state and quality of submissions to regulators
- Tools to simplify data quality, troubleshooting and regulator audits

Modern Platform

- A fit-for-purpose platform to support all statistical reporting use cases
- Cost-effective scalability and on-demand performance via cloud native architecture

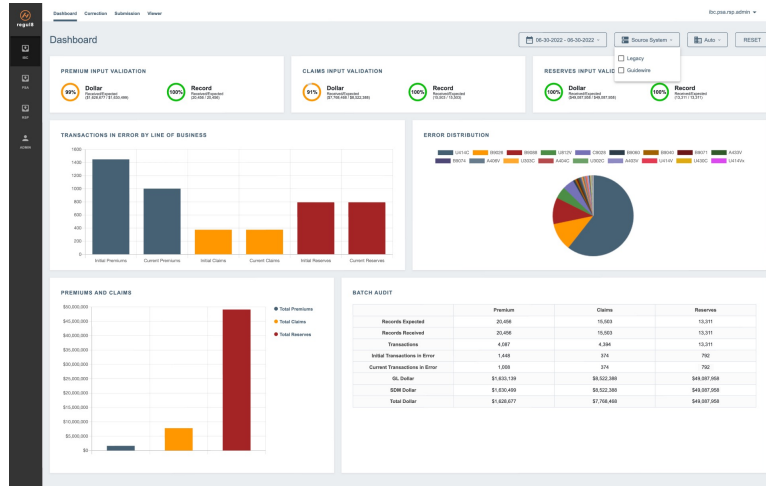


Technical Features

- A dashboard to enable validation of regular processing and submission to the regulators
- A pre-configured rules engine to validate data quality before submission
- A web User Interface (UI) to allow business users to correct the data prior to submission, thereby avoiding deficiency fees
- Automated reapplication of manual corrections to future transactions
- A self-service portal to enable business users to manage the submission/resubmission process
- Automated data reconciliation against data source and General Ledger
- Error analytics to enable corrective changes to source systems
- Full audit capabilities on error correction and data derivation
- Data Interface to the regulators to confirm submission status and acceptance to allow for automated reconciliation



regul8 User Interface



Dashboard

The Submission Management interface displays a detailed list of submissions with the following columns:

- Submission Number
- Batch ID
- Report Date
- Total Batch Dollars
- Total Transactions
- Status

Submission Number	Batch ID	Report Date	Total Batch Dollars	Total Transactions	Status
9312	0281065202310140101		3237	0	2
9309	0181065202310120101		65927	1491	2
9300	0281065202310130101		1990	0	2
9297	0181065202310110101		518073	1715	2
9294	0281065202310120101		2635	0	2
9291	0181065202310100101		542061	1666	2
9195	0281065202310110101		-3514	0	2
9192	0181065202310090101		52046	688	2
9189	0181065202310080101		70063	793	2
9186	0181065202310070101		84592	990	2
9183	0181065202310060101		92031	1780	2
9180	0281065202310070101		-1095	0	2

Submission Management

The Submission Audit Support interface provides a detailed view of a specific submission, including:

- Claim Identification:** A table listing individual claims with columns for Account Data, Claim Coverage Code, Claim Kind of Loss, Excluded Driver, RSP ID, Record Identifier, Batch Ct, Entry Ct, Company #, Branch Ct, and Trans Ct.
- Batch ID, Entry Date, Claim Identification, Accident Date, Claim Coverage Code, Claim Kind of Loss, Excluded Driver:** Expandable sections for further details on each field.

Claim Identification	Account Data	Claim Coverage Code	Claim Kind of Loss	Excluded Driver	RSP ID	Record Identifier	Batch Ct	Entry Ct	Company #	Branch Ct	Trans Ct
CL-A000-0001-6123-1	20220609	427	2A	0	100	3	298	202302	655	00	2
CL-A000-0001-6123-2	20220609	427	2A	0	100	3	298	202302	655	00	3
CL-A000-0000-8759-1	20211224	74	46	0	100	3	308	202302	655	00	2
CL-A000-0001-0969-1	20220223	12	16	0	100	3	318	202302	655	00	2
CL-A000-0001-0969-2	20220223	12	16	0	100	3	318	202302	655	00	2
CL-A000-0001-0969-3	20220223	12	16	0	100	3	318	202302	655	00	3
CL-A000-0000-8759-2	20211224	74	41	0	100	3	348	202302	655	00	2
CL-A000-0000-8759-3	20211224	74	85	0	100	3	348	202302	655	00	2
CL-A000-0001-7115-1	20230723	12	16	0	100	3	348	202302	655	00	2
CL-A000-0001-7115-2	20230723	12	16	0	100	3	348	202302	655	00	2

Submission Audit Support



Contact us

Hubio Offices

20 Victoria Street, 6th Floor
Toronto, ON M5C 2N8

1-888-999-7107
info@hubio.ca

HUBIO