



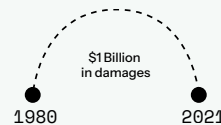
# Near Real-Time Situational Awareness for Wildfires

## Addressing a multi-billion dollar problem

There is no doubt that climate change is impacting the frequency and severity of wildfires worldwide. Even though wildfire risk is included in standard homeowner insurance policies, modelling wildfire risk remains challenging. This is because of the ambient environmental conditions such as air temperature, humidity, or the unpredictable role of the human factor in both initiating and suppressing fires.



Climate change is increasing the occurrence of wildfires globally



Between 1980 and 2021, the US alone had 20 catastrophic wildfires (16 of them happened in the past 2 decades), that caused more than \$1 billion in damage each



99 million people, or one-third of the US population are at risk, living in the Wildland Urban Interface (WUI)

### ICEYE WILDFIRE INSIGHTS

#### Precise

Building-level impact data

#### Consistent

Acquire data regardless of weather, light and smoke conditions

#### Reliable

Able to capture every wildfire catastrophe in the US

#### Timely

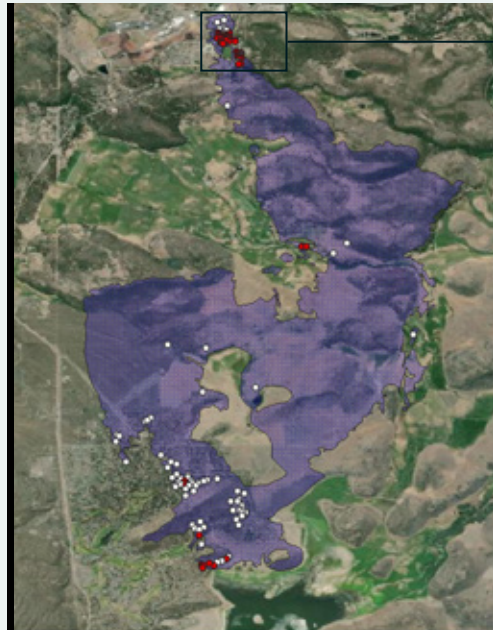
Delivers data every 24 hours during a given wildfire event

## What if you could understand wildfire damage within hours vs. days?

Owning the world's largest synthetic-aperture radar (SAR) constellation, ICEYE combines earth observation insights from space with advanced data analytics and machine learning. As a result, for the first time in history, we can provide accurate and immediate, building-level insights into the situation on the ground.

# Deliver Radically Better Business and Service Outcomes with ICEYE

Before ICEYE insurers relied on aerial optical imagery which had to wait for clear skies to capture images for analysis. Now with ICEYE's Wildfire Insights, data is captured through the cover of smoke, ash, and darkness to deliver fast and accurate building-level damage detection empowering insurers to respond faster and more effectively.



■ Affected Area   ■ Damage   □ No Damage

- With ICEYE's radar technology, you can **take out the guesswork** of looking at news reports and aerial optical imagery, and reduce the stress on your team who is working under extreme time pressure. This allows your organization as a whole to respond to events faster and more efficiently which saves operational costs and also provides better customer service and help to size losses.
- ICEYE's Wildfire building damage assessment product delivers the **output in a vector format** (either latitude, longitude points or building footprints) with a binary classification of damage ('destroyed'/'undamaged') per location, within 24 hours.



→ [Talk to our Solutions Sales Team](https://iceye.com/solutions/contact)  
[iceye.com/solutions/contact](https://iceye.com/solutions/contact)



**Rapid Policyholder Engagement**



**Accelerate Claims**



**Size Losses Better**