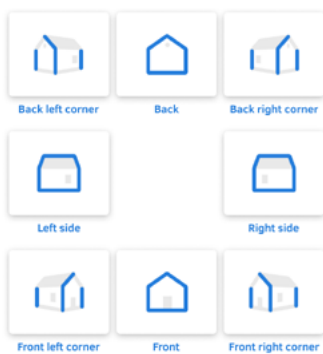


Taking photos with HOVER

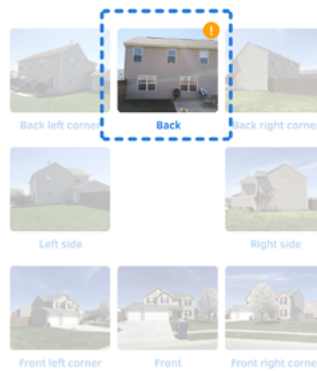
Which photos are needed

The app will guide you through the process so taking photos is simple and fast.

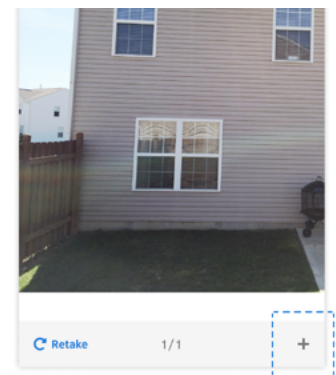
- 1 Eight photos of the exterior of your property - one of each side and corner.



Tap on any tile to add a photo of that location.

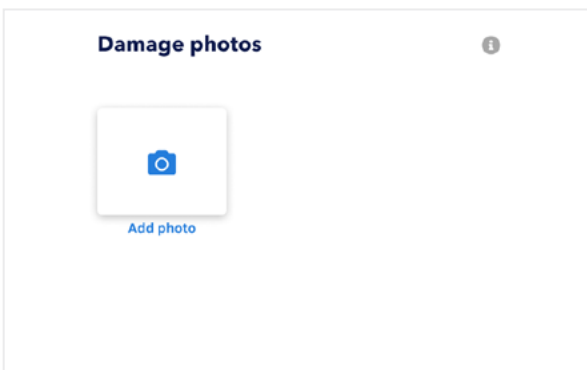


An alert might prompt you to take additional photos.

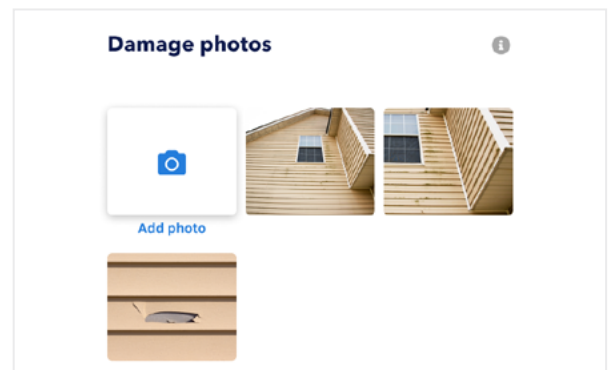


Tap on the tile with the alert and then on the plus sign to add photos.

- 2 Close-up photos of any property damage that you can capture from the ground.



Tap on the "add photo" tile to add damage photos.



There is no limit to the number of photos.

What is a good photo

A good photo includes the full property. The below tips will set you up for success.



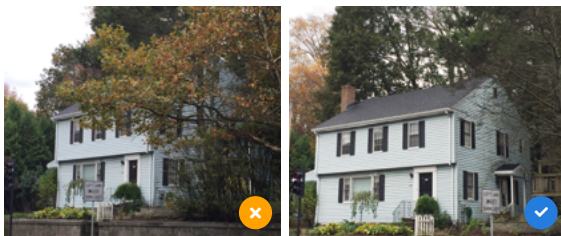
Key tips to keep in mind

- Always rotate your phone to landscape mode
- For each photo, step back as far as needed to view the entire structure in the frame
- Include free space around the top, bottom and edges of the property



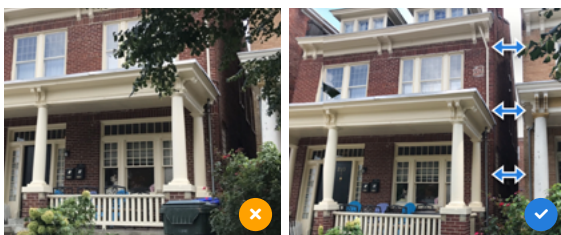
Corner shots are important

Make sure to include the full structure in the frame and free space on each side of the property.



Obstructions?

Try to move around to minimize obstructions and get the best possible view.



Tight lot lines?

Try to adjust your position until you see some free space in between the properties.