



EnterpriseEngage upgrade journey
with Hexaware using DigIT, a Digital
upgrade toolkit



Digital technologies are fundamentally changing how businesses across all industries operate and serve their customers—and insurance is no exception. Digital platform and service providers are transforming the competitive landscape and elevating customer expectations, so insurance companies must integrate digital technologies into their operations to keep pace. Currently, only 24% millennials buy insurance through local agencies and with the number of smartphones projected to touch almost 7.5 Billion by 2026, more and more consumers will move to digital channels for buying insurance.

The new EnterpriseEngage portal will help P&C Insurers increase speed to market in the digital world, enable awesome experience for users and provide anywhere, anytime service to customers in addition to operational efficiency and future flexibility.

Why should customers move to Guidewire Digital 11

- **New platform is fast** – It is built using React and Virtual DOM - helps in improving speed
- Existing platform built using **AngularJS 1.x** and Google will soon stop supporting this platform. AngularJS 1.5 and earlier has multiple security concerns (several known vulnerabilities, including Content Security Policy Bypass, Cross-Site Scripting, and JSONP Callback Attack)
- **New platform is cloud-ready** – deploying and containerizing new platform in cloud is very easy
- **Digital 11** is true **customer-centric** application – helps customers, providers to collaborate with insurance companies and customize the products as per their needs. Metadata-driven framework helps to quickly launch new / customized LOBs.
- New platform comes with **built-in component libraries** to build and deploy custom pages faster. This also promotes re-use of code and maintain consistency across LOBs.

Re-platforming to Digital 11

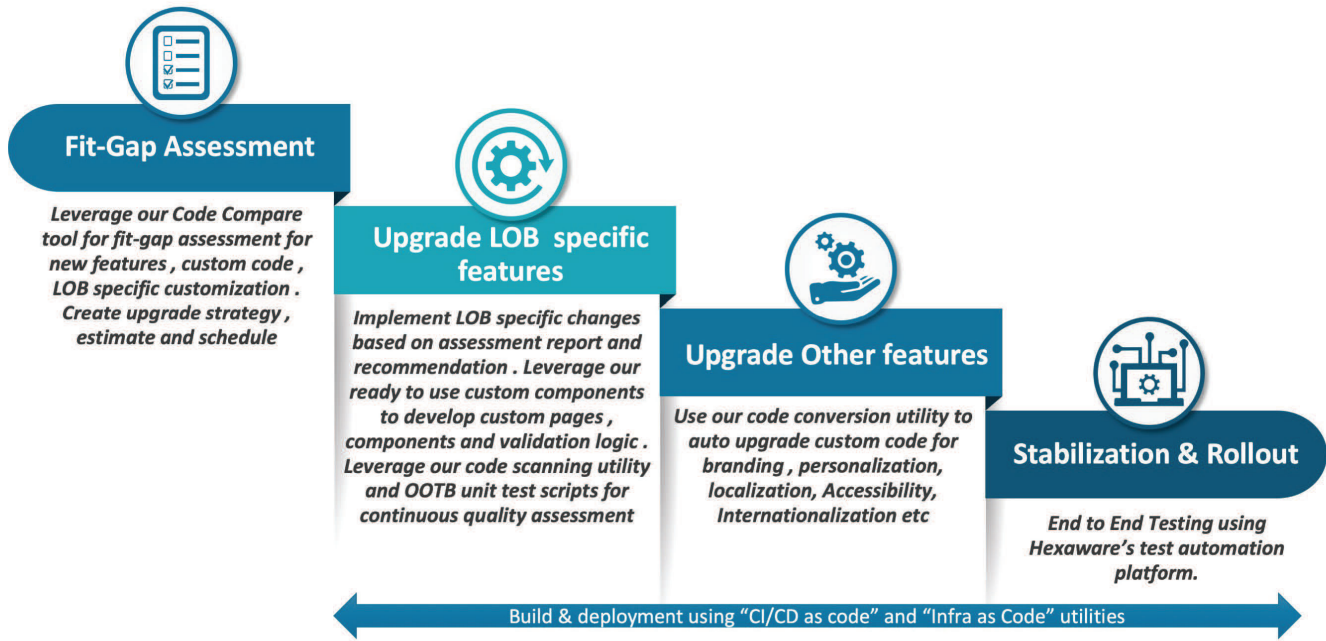
Journey to Digital 11 is not a regular upgrade journey, it is complete re-platforming to a new and more advanced technology platform.

The picture below shows a quick gap analysis between old platform (AngularJS 1.x) and new platform (React). This analysis is a point of view from the study conducted by one of our certified consultants from the EnterpriseEngage product engineering team. It is evident that an upgrade utility cannot automatically upgrade to new platform, except in a few areas as given above. Hexaware is Guidewire’s product engineering partner and hence we understand complexity of re-platforming. Based on our expertise, we have built-in tools, best practices, methodology and framework to significantly reduce upgrade cost and time.



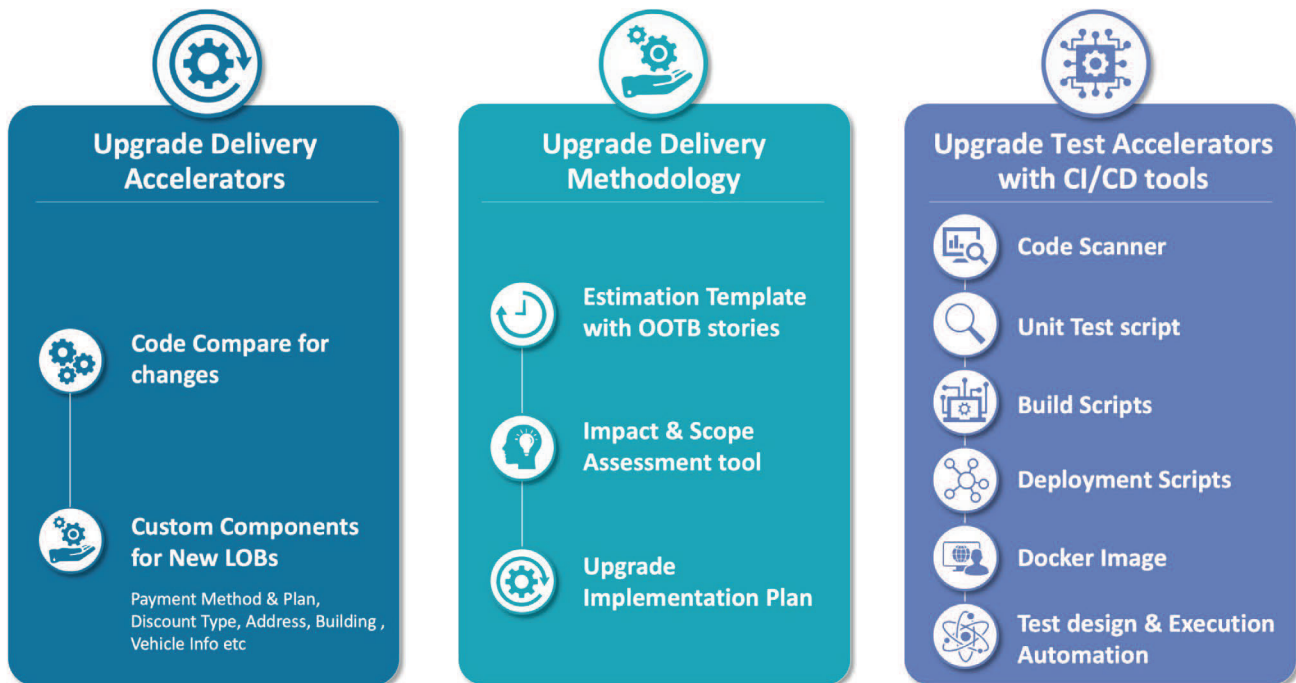
How Hexaware can Make the Upgrade Journey Easy

Hexaware is the product engineering partner of Guidewire for EnterpriseEngage. Having worked with the Guidewire product engineering team to rewrite the EnterpriseEngage portal, we understand the new platform inside out. Based on this knowledge, we have defined the EnterpriseEngage upgrade methodology and built an upgrade toolkit – DigIT. This will enable insurers move to the new version of EnterpriseEngage faster and with minimal risk. A snapshot of our approach is depicted in the picture below:



Hexaware's Digital Quick Upgrade Toolkit, DigIT

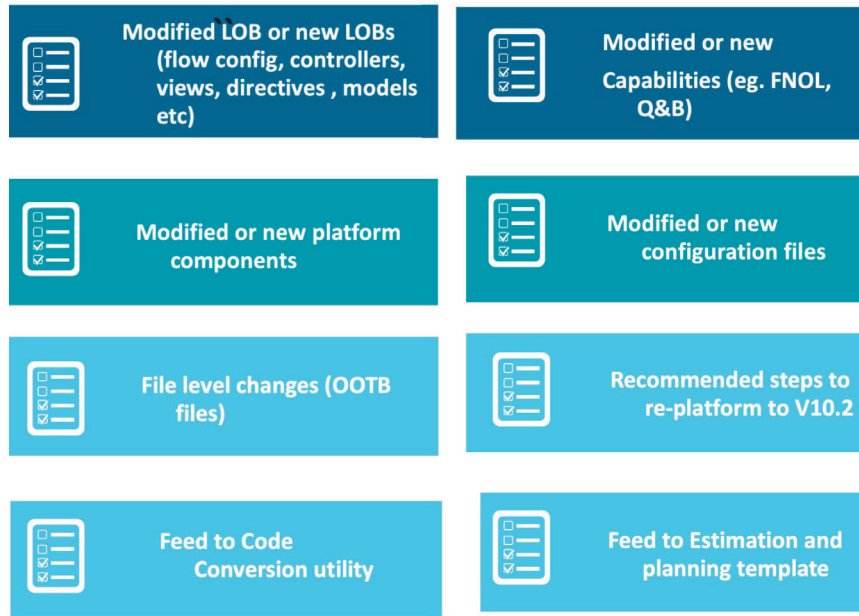
A snapshot of various components of our DigIT toolkit along with a brief description of how it will support each stage of EnterpriseEngage upgrade is defined below:



STAGE	HEXAWARE ACCELERATOR	BENEFITS
IMPACT & SCOPE ASSESSMENT	Code Compare for Changes – Compares OOTB version to your existing version of EnterpriseEngage to check the modifications to LOB, Capability, Features, Platform etc. The output will be a report that gives a detailed view on customizations done across each area which will help us analyze the upgrade complexity	Reduces the impact analysis effort by almost 50%
ESTIMATION MODEL	Estimation Model – Based on the above assessment for customization and new functionalities needed by business, we will be able to provide the time & effort needed for the upgrade using our estimation template and model	Accurate estimates for a fixed priced upgrade
PLANNING	Upgrade Plan Template - The estimation template will in turn drive the upgrade plan which will be created using our pre-filled base upgrade plan template.	Readily available base plan for upgrade
DEVELOPMENT & UNIT TESTING.	<p>Custom Components – A reusable UI component with built-in business rules and interfaces. It has a pre-built library of 50+ custom components for new functionalities required in existing LOBs and for LOBs that are not available in OOTB. This enables quick launch of new products in EnterpriseEngage</p> <p>Code Scanner – A repository of quality measurement rules configured in SonarQube to access the code quality of the new React code</p> <p>Unit Test Scripts – Test cases and scripts for OOTB functionality for unit testing</p>	Quick time-to-market with reduction in the development effort by 15-20%
UPGRADE TESTING & ROLLOUT	System Test design & Execution – Integrated Test Design to Execution (iD2E) framework to automate end-to-end functional testing of EnterpriseEngage portal. It has a repository of pre-built test design models to generate 500+ test cases and execution scripts for EnterpriseEngage portal.	Reduces the functional testing effort by 70%
NEW FEATURES/NEW LOB IMPLEMENTATION & TESTING	<p>Build & Deployment Scripts – DevOps platform for Guidewire EnterpriseEngage for automatic code build, code analysis, unit testing, regression testing and deployment</p> <p>Docker Image – Generate EnterpriseEngage development environment in run time through Docker Image</p>	Reduces the release cycle time by more than 50%

An important component of DigIT is our Code Compare tool. It will assess and prioritize the areas with “most customization” and provide analysis report and recommendation on the steps for upgrade. This tool will help developers analyze the customization in current version and introduce these changes in the new platform based on recommended steps.





Why Hexaware

Hexaware is a Guidewire EnterpriseEngage 10.1 Development & Support partner and brings the following differentiators:

1. People

- Team with an experience of developing EnterpriseEngage portal by virtue of being Guidewire EnterpriseEngage Product Engineering Partner
- A group of certified EnterpriseEngage consultants

2. Process

- Digital Quick Upgrade Toolkit, DigIT, with prebuilt estimation model, templates, and best practices to minimize the upgrade risk

3. Tools

- Hexaware's Digital Quick Upgrade Toolkit, DigIT to significantly reduce upgrade cost by 20-30% and timelines by 25-35%

About Hexaware

Hexaware is the fastest growing next-generation provider of IT, BPO and Consulting services. Our focus lies on taking a leadership position in helping our clients attain customer intimacy as their competitive advantage. Our digital offerings have helped our clients achieve operational excellence and customer delight. We are now on a journey of metamorphosing the experiences of our customer's customers by leveraging our industry-leading delivery and execution model, built around the strategy - Automate Everything®, Cloudify Everything®, Transform Customer Experiences®. Hexaware services customers in over two dozen languages, from every major time zone and every major regulatory zone. Our goal is to be the first IT services company in the world to have a 50% digital workforce.

Learn more about Hexaware at www.hexaware.com

NA Headquarters

Metro 101, Suite 600,101 Wood
Avenue South, Iselin,
New Jersey - 08830
Tel: +001-609-409-6950
Fax: +001-609-409-6910

India Headquarters

152, Sector - 3
Millennium Business Park
'A' Block, TTC Industrial Area
Mahape, Navi Mumbai - 400 710
Tel : +91-22-67919595
Fax: +91-22-67919500

EU Headquarters

Level 19, 40 Bank Street,
Canary Wharf,
London - E14 5NR
Tel: +44-020-77154100
Fax: +44-020-77154101

APAC Headquarters

#09-01, One Finlayson
Green, 1 Finlayson Green,
Singapore - 049246
Tel : +65-63253020
Fax: +65-6222728

Australia Headquarters

Level 3, 80 Mount St
North Sydney NSW 2060
Australia
Tel : +61 2 9089 8959
Fax: +61 2 9089 8989

Safe Harbor Statement

Certain statements in this press release concerning our future growth prospects are forward-looking statements, which involve a number of risks, and uncertainties that could cause actual results to differ materially from those in such forward-looking statements. The risks and uncertainties relating to these statements include, but are not limited to, risks and uncertainties regarding fluctuations in earnings, our ability to manage growth, intense competition in IT services including those factors which may affect our cost advantage, wage increases in India, our ability to attract and retain highly skilled professionals, time and cost overruns on fixed-price, fixed-time frame contracts, client concentration, restrictions on immigration, our ability to manage our international operations, reduced demand for technology in our key focus areas, disruptions in telecommunication networks, our ability to successfully complete and integrate potential acquisitions, liability for damages on our service contracts, the success of the companies in which Hexaware has made strategic investments, withdrawal of governmental fiscal incentives, political instability, legal restrictions on raising capital or acquiring companies outside India, and unauthorized use of our intellectual property and general economic conditions affecting our industry.